

The Brisbane Zero Campaign is a community-based project to build public support for ending homelessness.

Brisbane Zero aims to know our homeless by name and is committed to our goal for homelessness to be rare, brief and non-recurring.

The Brisbane Zero data collaboration includes our regional members:

3rd Space
Anglicare SEQ
Annerley Baptist Church
ATSICH Brisbane Housing Service
Brisbane City Council
Community Plus QLD
Communify QLD
Drug ARM
Encircle
Footprints
Indigenous Urban Institute of Health (IUIH)
Kyabra SEQ
Micah Projects
Mission Australia
Salvation Army
Sero4 Mara Project
Silky Oaks
Youth Housing Project



Brisbane Zero aims to know our homeless by name and is committed to our goal for homelessness to be rare, brief and non-recurring.

162 Boundary Street, West End, QLD



@brisbanezero

brisbanezero@micahprojects.org.au

Unlocking systems
to end homelessness



¹ 1578 individual adults were surveyed by participating Brisbane Zero services from 2019 to 2022.

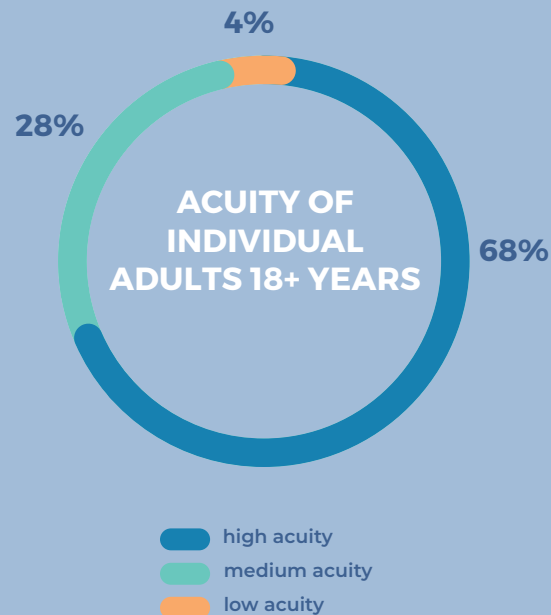
² Specialist homelessness services annual report 2020-21, Clients leaving care - Australian Institute of Health and Welfare (aihw.gov.au)

Brisbane Zero is Supported by Ellen Whitty Trust.

**This snapshot shows the indicator
of needs by survey of a cohort of**
INDIVIDUAL ADULTS
**experiencing homelessness in
Brisbane (2019-2022)**



BRISBANE INDIVIDUAL ADULTS TOLD US



'Acuity' levels identify the kind of housing and support people require to live more stable and productive lives.

High Acuity

68% need Supportive Housing: permanent, affordable housing with embedded healthcare and community services.

Medium Acuity

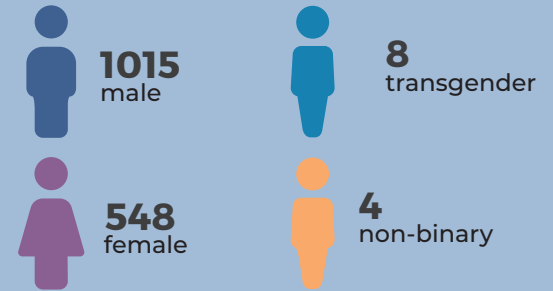
28% require an affordable and stable housing solution with short-term support services.

Low Acuity

4% simply need affordable housing.

Partners in the Brisbane Zero Campaign use a tool called the **Vulnerability Index- Service Prioritisation Decision Assistance Tool (VI-SPDAT)**, to pre-screen for health, housing and support needs.

This fact sheet provides information about 1578* individual adults who experienced homelessness over the last 3 years.¹



At the time they were surveyed:



*This data represents only 43% of individual adults who presented at and consented to be surveyed by participating Brisbane Zero homelessness services over the last 3 years. It does not represent all of the individual adults experiencing homelessness in Brisbane during this period.

Over 3 years we surveyed

1578⁽ⁿ⁾

individuals
experiencing homelessness
in Brisbane

The following data shows the physical and mental health conditions of the individual adults surveyed.¹

TOPLINE HEALTH

	Total
At least one Chronic Health (CH) condition	890
At least one Mental Health (MH) condition	1346
Dual Morbidity (MH+SU)	942
Tri-morbidity (MH + SU + CH)	593
Substance Use (SU)	1029
At least one type of disability	655

	Total
History of heat stroke/Heat exhaustion	250
Foot / Skin infections	227
Heart disease	183
Emphysema	135
Diabetes	131
Intellectual disability	316
Physical disability that limits housing or capacity to live independently	193

INSTITUTIONAL HISTORY

58% of individuals surveyed have been in institutional care. As the AIHW report 2020-2021 indicates people leaving care facilities can be particularly vulnerable to experiencing homelessness.²

	Total
Adult institutional care	602
Watch house or Prison	422
Childhood institutional Care	318
Youth Detention	207

Adults who have experienced homelessness have high levels of vulnerability and therefore often present at health and emergency services.

90% of individuals surveyed have used at least one public emergency service.

EMERGENCY SERVICE USAGE

	Total
Presentations at Accident & Emergency	819
Non-Mental Health Inpatient	522
Mental Health Inpatient	310



♦ Percentage of total individual adults (n) 1578

INDIVIDUAL ADULTS SNAPSHOT

